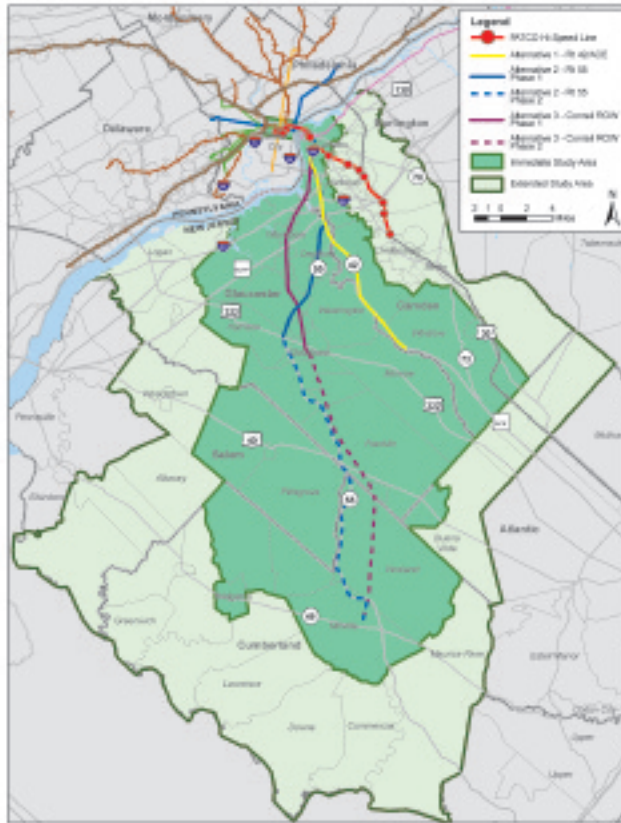




Southern New Jersey to Philadelphia Mass Transit Expansion Alternatives Analysis Study

The Port Authority Transit Corporation (PATCO), a subsidiary of The Delaware River Port Authority (DRPA), is currently evaluating the need and potential for expanded rapid transit service to Gloucester, Camden, Cumberland and portions of Atlantic and Salem counties. This is a continuation of a previous feasibility study completed in 2005 which strongly endorsed pursuing increased rail transit options in this corridor to address transportation and mobility needs.



Several alternatives for rail transit expansion are being studied through an Alternatives Analysis (AA) process. The goal of an AA is to identify a preferred alternative that best addresses the transportation deficiencies and study area needs in a cost-effective way.

What's New Since We Last Met

- Numerous Studies Conducted In Past 50 Years With No Results For Gloucester And Cumberland Counties
- Over 500 Comments From Previous Transit Study (2005) Indicated Strong Support For Improved Rapid Transit System
- Strong Agency and Elected Official Support
- Worsening Highway Congestion With No End In Sight And No Room For New Capacity
- Continued Commercial & Residential Growth with no comparable expansion to Transportation System
- Gas Prices Have Risen From \$1.50 a Gallon to Over \$3.00 a Gallon

What We Want to Hear From You!

- Does The Existing Public Transportation System Meet Your Travel Needs?
- How Does Congestion Affect Your Mobility In The Region?
- Should There Be Options To The Congested Roadway Network Such As Route 55, Route 42 And 676?
- Do You Experience Delays When Traveling To Work?
- Is Improved Access To Camden & Philadelphia Important To You?
- What Is Important In Evaluating Transportation Alternatives?
- What Is Your Preference Of Mode, Alignment And Station Areas That Have Been Presented In The Past?
- Other Ideas And Thoughts – Your Comments Count!

Study Area Needs

1. Improve Transit Choices in the Study Area

- Increase Rapid Transit Service in Southern NJ
- Provide Access to Growth Areas in Gloucester & Cumberland Counties
- Increase Service on the Existing Public Transportation System
- Improve Access from PATCO Speedline to Job Centers in Center City Philadelphia

2. Reduce Congestion with Effective Transit Investments

- Provide alternative to severe congestion levels along roadways
- Diminish reliance on the automobile with fast and effective transit alternatives

3. Maximize Existing Transportation Assets

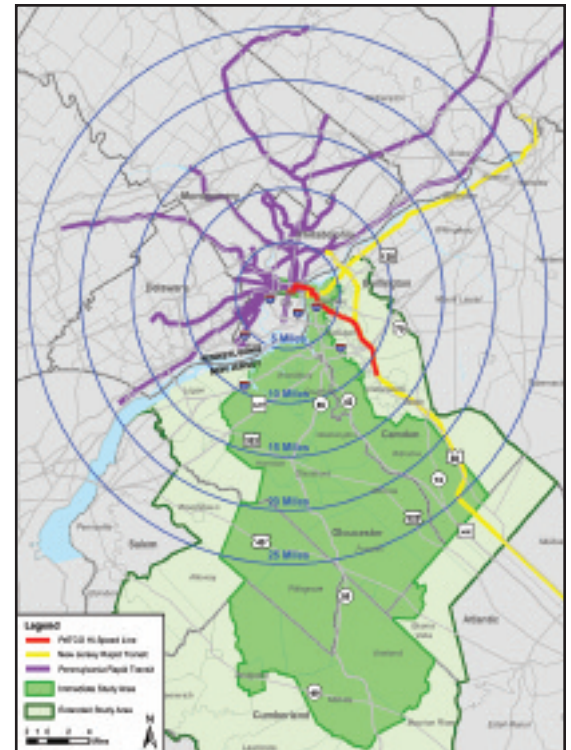
- Utilize existing transportation right-of-way
- Provide a Direct Connection into Philadelphia
- Minimize Environmental Impacts Through Use of Existing Infrastructure

4. Develop a Transit Network that Improves Links Between People and Activity Centers

- Improve Access to Core Areas of Employment and Redevelopment
- Connect and Serve Commercial, Institutional and Medical Activity Centers
- Develop a Common Method to Pay Fares Between Transit Systems
- Provide Better Information About Transit Facilities

Contact Us:

- Project Hot-Line **856-968-2252** for Additional Study Information or Special Assistance
- Visit our website: www.ridepatco.org



Rail Transit Network Regional Disparity

Philadelphia

Comprehensive Network including:

- 38 Miles Of Heavy Rail
- 225 Miles Of Commuter Rail
- 33 Miles Of Light Rail

New Jersey

Limited Network including:

- 14 Miles of PATCO Heavy Rail in Camden County Only
- 50 Miles Commuter Rail Atlantic City Line with Majority Outside Study Area
- 34 Miles Light Rail River Line with Majority Outside Study Area